



### Fosroc Solutions:

- Specialist admixtures
- Curing compounds
- Protective coatings
- Waterproofing
- Floor toppings
- Grouts
- Anchors
- Repair mortars
- Adhesives
- Joint sealants
- Injection materials

Fosroc has been providing industry solutions for more than 80 years. We know that the long term strength and durability of the reinforced concrete is affected by its quality and permeability. We have a variety of problem-solving products for difficult detailing and making-good defects. Our products are user friendly and designed to provide lasting solutions for the future of your concrete.

Fosroc has Concrete Quality at the core of our business. We have a vast package of materials to improve the concrete you pour.

## Fosroc Products:

### Renderoc FC

A single part thin application smoothing product for re-profiling concrete

### Renderoc HB

A high-build very lightweight repair mortar for overhead patch repairs

### Renderoc HB30

A medium build and mid-strength repair mortar for vertical and overhead patch repairs

### Renderoc GP

A medium build and mid-strength repair mortar for vertical and overhead patch repairs

### Renderoc S

A high-strength patch repair mortar suitable for structural work

### Renderoc LA

A fluid microconcrete suitable for casting larger repairs & around congested rebar.

### Renderoc Plug

A very fast setting mortar for pugging leakages

### Patchroc RSP

A fast setting floor patching mortar with excellent durability; suitable for external applications.

### Cemtop 200

A self-levelling pumped screed, for heavy duty internal applications

### Nitoprime Zincrich

A steel primer for protecting exposed reinforcement from corrosion

### Nitobond AR

Acrylic primer for most Renderoc repair mortars

### Nitobond EP

Two-part epoxy bonding agent suitable for structurally bonding repairs and general concrete bonding.

### Nitobond SBR

Polymer additive for enhancing cementitious slurries, renders, screeds and mortars

### Nitomortar S

High Strength Epoxy mortar with excellent abrasion resistance

### Nitomortar GP

General purpose epoxy mortar for structural repairs can be used on vertical surfaces.

### Nitomortar UA

Epoxy patching mortar that may be used under water or in very damp conditions

### Nitomortar BC

A high strength and very adhesive epoxy bedding compound

### Dekguard S

Single part protective coating providing additional protection to concrete and reinforcement

### Conbextra GP

A flowable, cementitious grout, ideal for bearing static loads & anchoring reinforcement

### Nitofill EPLV

A low viscosity epoxy resin for injection of cracks between 0.25 - 9.0mm

### Nitoseal MS100

A primerless non-staining façade sealant with high movement accommodation.

### Nitoseal MS300

A one part tough flexible and abrasion resistant floor joint sealant



## Fosroc Solutions for Concrete Finishing



constructive solutions

[www.fosroc.com](http://www.fosroc.com)



constructive solutions



constructive solutions

[www.fosroc.com](http://www.fosroc.com)



## Honeycombing & Pinholes

Severity	Comments	Fosroc Product
MILD	Re-face and fill defects	Renderoc FC
SEVERE	Break out weak areas & reinstate with repair materials	Renderoc HB30 or Renderoc LA

## Voids/Mechanical Damage

Severity	Comments	Fosroc Product
MILD	Break out weak areas & reinstate with repair materials	Renderoc HB, HB30 or GP
SEVERE	Break out weak areas & reinstate with repair materials	Renderoc LA or Renderoc S

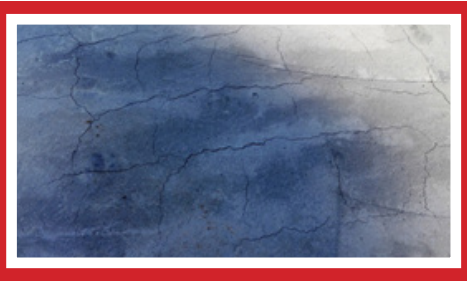
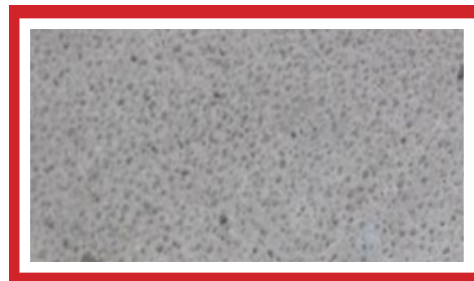


## Shutter Removal Damage

Severity	Comments	Fosroc Product
MILD	Re-face and fill defects	Renderoc FC
SEVERE	Break out weak areas & reinstate with repair materials	Renderoc HB30 or Renderoc LA

## Rain Damaged Slab

Severity	Comments	Fosroc Product
INTERNAL	Prepare concrete and re-cover	Cemtop 200
EXTERNAL	Prepare concrete and re-cover	Patchroc RSP



## Curing & Shrinkage Cracks

Severity	Comments	Fosroc Product
MILD	Re-face and fill defects	Renderoc FC
SEVERE	Inject with resin	Nitofill EPLV

## Live Movement & Settlement Cracks

Severity	Comments	Fosroc Product
FLOORS	Cut and re-seal with flexible filler	Nitoseal MS300
NON TRAFFICKED	Cut and reseal with flexible filler	Nitoseal MS100



## Static Movement & Settlement Cracks

Severity	Comments	Fosroc Product
MILD	Inject with low viscosity resin	Nitofill EPLV
SEVERE	Fill with thixotropic resin	Nitobond EP

## Damaged Arises & Edges

Severity	Comments	Fosroc Product
	Heavily trafficked damage needs a heavy duty repair & re-seal	Nitomortar S Nitoseal MS 300

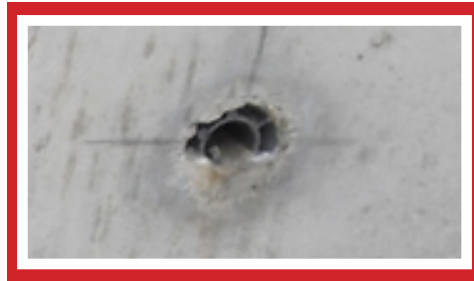


## Low Cover / Exposed Rebar

Severity	Comments	Fosroc Product
MILD	Apply skim with dense cover	Nitoprime Zincrich & Renderoc FC
SEVERE	Apply anti carbonation coating	Nitoprime Zincrich, Renderoc FC or Dekguard S

## Filling Lifting Eyes & Spacers

Severity	Comments	Fosroc Product
DRY	Reinstate with repair material	Renderoc HB30
WET	plug seepage with rapid setting waterproofer	Renderoc Plug



## Wet to Dry Casting

Severity	Comments	Fosroc Product
	Remove laitance & apply high strength adheive	Nitobond EP

## Grouting of Bases / Precast Elements

Severity	Comments	Fosroc Product
	Create form & cast flowable non-shrink grout	Conbextra GP

